

Parkheath

Sold on Service

Lancaster Grove NW3

£3,250 PCM (£750 per week) - Camden Band F

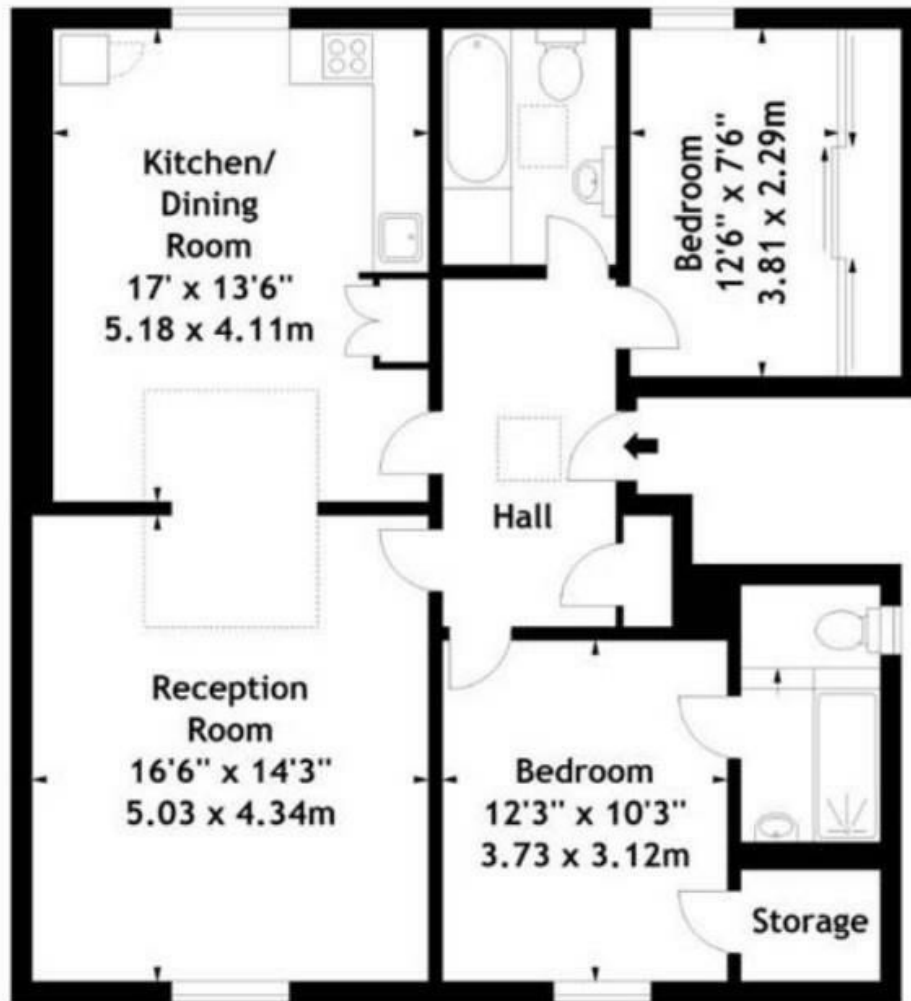


Wonderfully spacious top floor apartment
Lovely bright reception room
Main bedroom with en suite shower room
Family bathroom/WC
Close to Belsize Park and Swiss Cottage Tubes

Attractive double-fronted period conversion
Great size kitchen/diner
Second double bedroom with fitted wardrobes
Desirable location for local amenities
EPC: Rating tbc, Council Tax: Camden band F

Belsize Park Office 020 7431 3104

Lancaster Grove, NW3
Approx. Gross Internal Area
975 Sq Ft - 90.58 Sq M



Second Floor

Measured in accordance with RICS guidelines. Every attempt is made to ensure accuracy, however all measurements are approximate. This floor plan is for illustrative purposes only and is not to scale.

© Datography Ltd 2014
Photographs * Floorplans * Virtual Tours
Tel: 0845 643 4401 www.datography.com

The particulars do not constitute part of an offer or contract. The particulars, including text, photographs and plans, are for the guidance only of prospective purchasers/tenants and must not be relied upon as statements of fact. The descriptions provided therein represent the opinion of the author and whilst given in good faith should not be construed as statements of fact. Nothing in these particulars shall be deemed a statement that the property is in good condition or otherwise or that any services or facilities are in good working order. All measurements are approximate